



# Everleigh

MUNNO PARA



Acacia release



**Fairmont**  
PROJECTS



# Position perfect.

**Everleigh offers you that idyllic mix of escape and connection; where community meets convenience.**

Everleigh has been designed to create a desirable balance of quality new homes and open spaces, with many homes positioned facing a central reserve.

Located within the established suburb of Munno Para, this development is an ideal place to suit many lifestyles and family dynamics.

The Munno Para Railway Station is a 700m walk from Everleigh. Located on the Gawler line, it is a 20 minute train ride to Adelaide station.

The neighbouring 'Munno Para Primary School' is walking distance and supports approximately 340 students across 18+ classes.

With easy access to the northern expressway only being minutes from Everleigh (5kms down the road) and only a 40 minute commute to the Adelaide CBD. Travelling to and from work has never been easier.

Munno Para Shopping Centre and Elizabeth City Centre are just minutes away, as well as a variety of local specialist shops.





# Fixed price house and land.

**At Everleigh you have the opportunity to secure an affordable, fixed price house and land package within the growing northern suburb of Munno Para.**

All homes in Everleigh will feature spacious open plan living and quality inclusions.

You have the choice of up to three different facades, specific to your desired allotment and the option to choose from three carefully curated interior colour schemes; latte, maple & iron.

All this choice is provided as a fixed price turn-key solution, meaning that buying has never been easier.

Everleigh is a partnership between the South Australian Housing Authority and Fairmont Projects, where all properties will be available to those who qualify via HomeseekerSA. To see if you are eligible, please visit [liveateverleigh.com.au/eligibility](https://liveateverleigh.com.au/eligibility) or <https://www.homeseeker.sa.gov.au/buying-a-home/homeseeker-sa-eligibility>

**Fairmont**  
PROJECTS



Government  
of South Australia



# How to buy.

## Am I eligible to purchase?

To find out if you are eligible to buy a home through HomeSeeker SA and Everleigh you need to answer 'yes' to the following statements.

- Either I am or the person I am buying the home with are/is an Australian citizen or holds permanent residency in Australia and is 18 years or older.
- My annual household income is less than \$130,000 before tax (couple or family) OR \$100,000 before tax (single)
- My assets are valued at less than \$643,500 (couple or family) OR \$504,500 (single).
- I do not currently own any residential property, including overseas or in regional Australia
- If I do currently own a residential property I have a binding contract for the sale of that property in place.
- I will live in my new home bought through HomeSeeker SA for a continuous period of no less than 6 months following property settlement.
- I have saved enough money for a deposit and upfront fees and charges to buy a home.
- I have finance pre-approval from a bank or finance institution.

We have partnered with HomeStart to provide unique finance opportunities. Please get in touch to find out more.

## Confirming your eligibility:

To confirm your eligibility, you simply need to sign a Declaration of Eligibility (in the form of a Statutory Declaration) stating you meet the eligibility requirements.

Rob Brereton will provide this document to you if you are first in line to purchase the property.



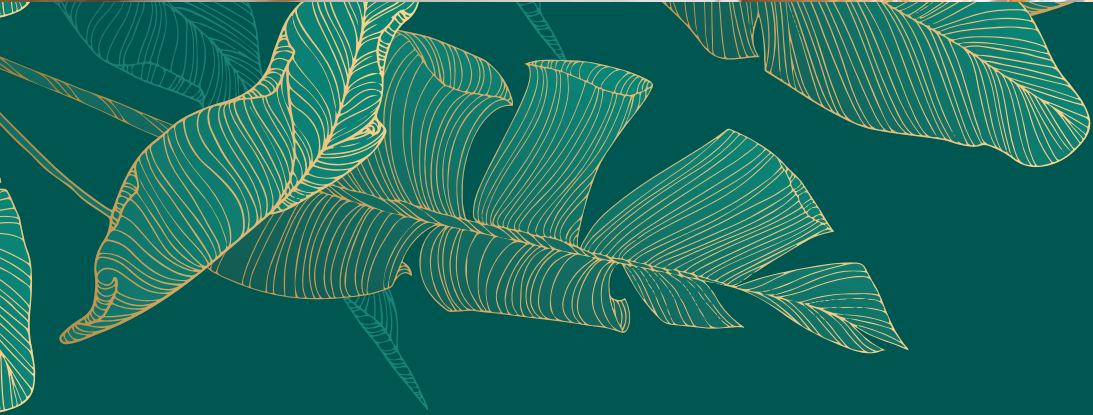
# Siteplan



**Acacia Release**  
Home Designs

- Aria A
- Demi A
- Demi B
- Zuri

All dimensions and room sizes are approximate and may not be to scale. Plans and elevations are for illustration purposes only.



# Floorplans

Everleigh at Munno Para features three floorplans to select from.

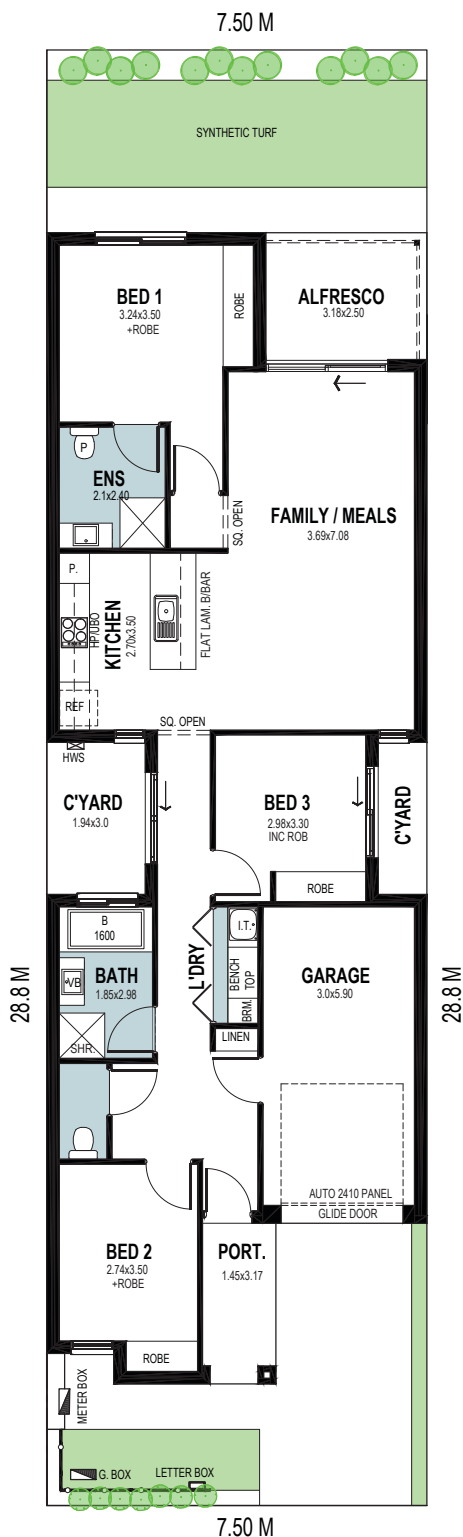
Choose your desired allotment based on its location within the release.

Compact but striking, the Aria features a stylish facade, perfectly balanced with a mix of contrasting materials.

# Aria A

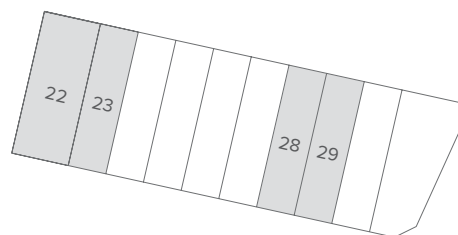
LOT 22, 23, 28 & 29

3 2 1



Living	118.45m <sup>2</sup>
Portico	4.54m <sup>2</sup>
Alfresco	7.95m <sup>2</sup>
Garage	20.50m <sup>2</sup>
<b>Total</b>	<b>151.45m<sup>2</sup></b>

Width	7.50m
Depth	22.72m
Lot size	7.5 x 28.8m



**PLEASE NOTE:**

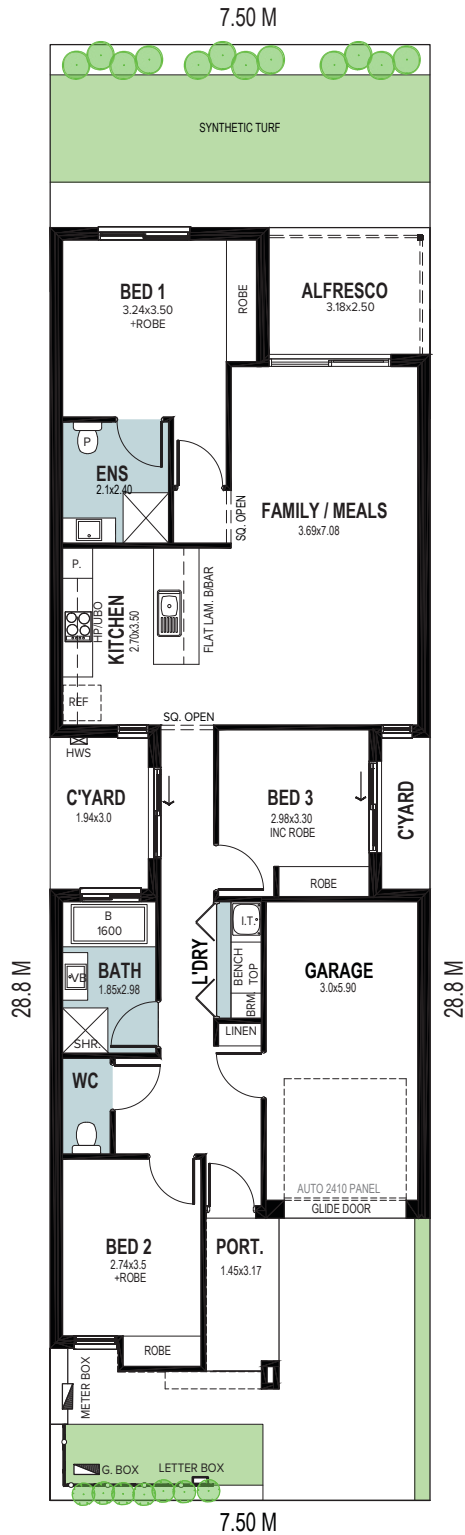
House and land size may differ slightly from plan shown. Refer to website for details.

The edgy, clean, lines of the Demi promises to provide impressive street appeal.

# Demi A

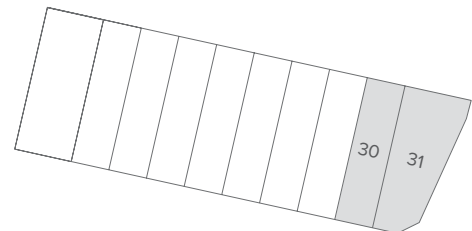
LOT 30 & 31

3 2 1



Living	118.45m <sup>2</sup>
Portico	4.54m <sup>2</sup>
Alfresco	7.95m <sup>2</sup>
Garage	20.50m <sup>2</sup>
<b>Total</b>	<b>151.45m<sup>2</sup></b>

Width 7.50m  
 Depth 22.92m  
 Lot size 7.5 x 28.8m



**PLEASE NOTE:**

House and land size may differ slightly from plan shown. Refer to website for details.

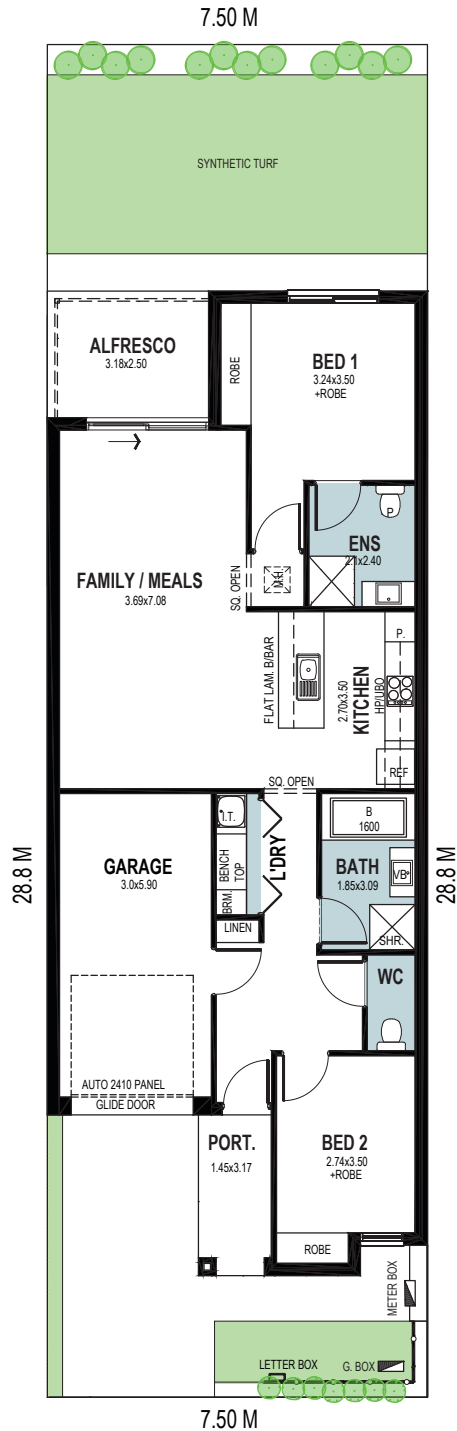


The edgy, clean, lines of the Demi promises to provide impressive street appeal.

# Demi B

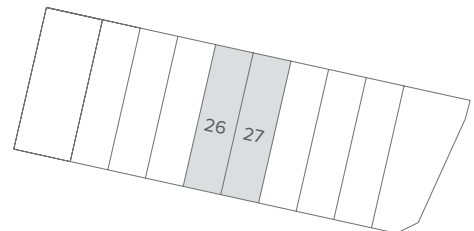
LOT 26 & 27

🛏️ 2 🚿 2 🚗 1



Living	102.4m <sup>2</sup>
Portico	4.54m <sup>2</sup>
Alfresco	7.95m <sup>2</sup>
Garage	20.50m <sup>2</sup>
<b>Total</b>	<b>135.4m<sup>2</sup></b>

Width	7.50m
Depth	19.42m
Lot size	7.5 x 28.8m

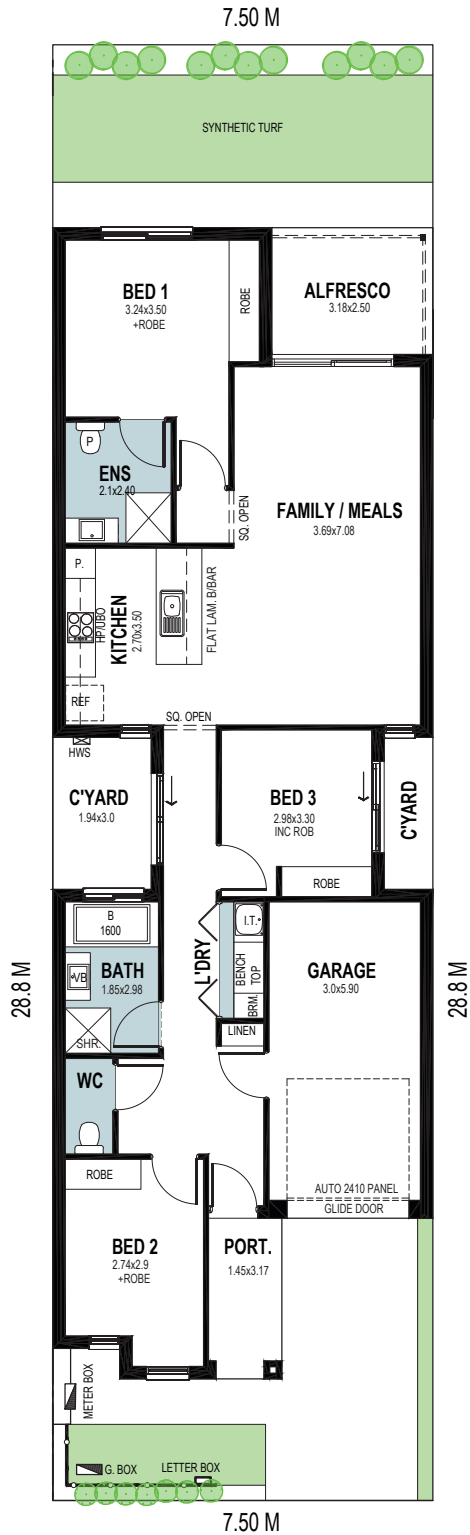


The Zuri boasts a contemporary but classic facade that evokes a sense of timeless elegance.

# Zuri

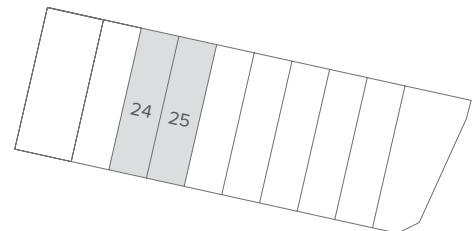
LOT 24 & 25

3 2 1



Living	118.45m <sup>2</sup>
Portico	4.54m <sup>2</sup>
Alfresco	7.95m <sup>2</sup>
Garage	20.50m <sup>2</sup>
<b>Total</b>	<b>151.45m<sup>2</sup></b>

Width 7.50m  
 Depth 22.72m  
 Lot size 7.5 x 28.8m





# Style selections

Carefully selected by our team of designers, we have three timeless and inspiring colour schemes for you to choose from.

Feel at ease in your surroundings by enjoying a home that reflects you.



## GENERAL

Energy Rating	7 Star included
Silver Standard Package	Included
Solar Panels	3.32KW
Ceiling height	2700mm
Internal linings	10mm Boral sheetrock plasterboard
Entrance doors	Corinthian Flush Panel
Other external doors	Corinthian Flush Panel
External hardware	Tristan Lever Entrance Set Satin Chrome with Dexton Deadlock Single Cylinder Satin Chrome
Internal doors	Corinthian Painted Redicote Flush Panel doors
Internal door hardware	Tristan Lever Passage/Privacy Set Satin Chrome
Insulation	Internal Walls: R2.0, External Walls: R2.5 Thermocoustic, Ceiling: R5.0
Skirtings	67x18mm MDF bevel profile
Window architraves	67x18mm MDF bevel profile
Paint system	Matt acrylic, 2 coat system
Built in robes (as per plan)	Vinyl sliding doors (If applicable)
Electrical	Hard wired smoke detectors with battery backup, meter isolator & 6ka circuit breaker and earth leakage safety switch to meter box.
Lighting	Downlights to entry & main living areas, batten lights to remainder.
NBN provision	NBN provision - (single storey) dble p/point for HUB, conduit from pit to home located to future HUB, earth point on ONT to main electrical earth
Hot water service	Rheem gas continuous flow 26 litre
Air-conditioning	Split system to main living area and ceiling fans w/light to bedrooms.
Garage door	Automated panel lift door with two remote controls

## EXTERNAL

### ARIA

### DEMI

### ZURI

Bricks (front & rear)	Alloy	Discover	Wolf
Mortar	Natural Grey	Natural Grey	Natural Grey
Aluminum Slats	Light Oak	N/A	Merbau
Cladding Axon	Cloudy sky	Cotton grey	N/A
Render	Colorbond Monument	Basalt (Cotton Grey for lot 41)	Colorbond Surfmist
Roof	Colorbond Monument	Colorbond Basalt	Colorbond Night Sky
Gutter	Colorbond Night Sky	Colorbond Night Sky	Colorbond Night Sky
Fascia	Colorbond Night Sky	Colorbond Night Sky	Colorbond Night Sky
Garage door	Colorbond Night Sky	Colorbond Night Sky	Colorbond Night Sky
Garage door profile	Madison	Tuscan	Tuscan
Entrance door (incl door frame)	Cloudy Sky	Watty! Cotton Grey	Colorbond Surfmist
Windows	Black	Black	Black

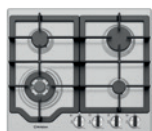
## LANDSCAPING

Paving	To driveway, perimeter, alfresco + courtyard (where applicable)
Fencing & gates	Good neighbour fencing + plinth. Monument Colorbond
Soft Landscaping	Artificial grass to rear/Minimal front plantings, 1 tree to front, Clothes line, letterbox
Stormwater	90mm PVC – connection to street/easement
Bin Bays	Bin bay with slat fencing to front
Rain Water Tank	1,000L Tank

# latte



Phoenix Pina  
Sink Mixer\*



Westinghouse  
600mm Gas Cooktop



Westinghouse  
600mm Electric Oven



Westinghouse 600mm  
Slideout Rangehood

## KITCHEN

1. Benchtop	Wilsonart Arcadia Textured Gloss
2. Splashback	Subway Grey Undulated Gloss 75x300, horizontal stack bond with Misty Grey grout
3. Lower cupboards, pantry, fridge provision	Laminex White Natural Finish
4. Overhead cupboards	Formica Mocha Firwood Grain Finish
Joinery handle	Satin Chrome - no handles to overhead cupboards
Sink	Acero 800 Single Bowl Abovemount Sink
Sink mixer	Pina Sink Mixer 200mm Gooseneck Chrome
Cooktop	Westinghouse 600mm Gas Cooktop
Oven	Westinghouse 600mm Multi-function Electric Oven
Rangehood	Westinghouse 600mm Slideout Rangehood
Dishwasher and microwave	Provisions only



Semi frameless shower screen



Phoenix Arlo Basin Mixer



Ivy Shower Arm & Rose



Festival 600mm Single Towel Rail, Toilet Roll Holder & Glass shower shelf in Chrome



Seima Kyra 017 Square Basin

## BATHROOMS

5. Benchtop	Wilsonart Arcadia Textured Gloss
6. Cupboard	Formica Mocha Firwood Grain Finish
Joinery handle	Satin Chrome
7. Floor tiles	Pavement Mist Matt 300x300 with Magellan Grey grout
8. Wall tiles	Plain White Matt 300x400, horizontal stack bond with Ultrawhite grout
Wall Tile height	2000mm to walls, skirt tile only to WC where applicable
Basin	Kyra 017 Ceramic Basin Square
Bath	Tondo 1525 Inset Bath (excluding lots 40-42)
Tapware	Phoenix Arlo Basin Mixer, Ivy Wall Mixers, Ivy Bath Outlet (excluding lots 40-42), Ivy Shower Arm & Rose, Chrome
Accessories	Festival 600mm Single Towel Rail, Toilet Roll Holder & Glass shower shelf in Chrome
Shower screen	Series 600 (Semi Frameless) Polished Silver Frame - Clear Glass
Toilet suite	Mero Closed Couple Toilet
Floor grate	Plastic Octagonal
Mirrors	Mirror over all vanity units, custom length x 750mmH x 4mm polished edge
Fan	Exhaust fan to bathroom

## LAUNDRY

Benchtop	Wilsonart Arcadia Textured Gloss
Cupboards	Formica Mocha Firwood Grain Finish
Laundry bi-fold doors	Formica Baikal Velour Finish (excluding lots 40-42)
Joinery handle	Satin Chrome
Floor tiles/skirting	Pavement Mist Matt 300x300 with Magellan Grey grout (N/A lots 40-42)
Wall tiles	Plain White Matt 300x400, horizontal stack bond with Ultrawhite grout
Wall Tile height	600mm splashback above bench, skirt tile only to remainder
Laundry sink	Acero 007 45Ltr Laundry Sink / (Tilos 600 Laundry unit 45L to lots 40-42)
Sink mixer	Ivy MK11 Sink Mixer Chrome

## GENERAL

9. Internal wall paint	Wattyl Comet Dust
10. Main floor laminate	Clix 7mm Laminate Old Oak Grey Brushed
11. Carpet to bedrooms/robes	Summit Point Townsend
Vinyl sliding door robes	Porcelain with matt silver frame

# maple



Phoenix Pina Sink Mixer\*



Westinghouse 600mm Gas Cooktop



Westinghouse 600mm Electric Oven



Westinghouse 600mm Slideout Rangehood

## KITCHEN

1. Benchtop	Polytec Aspen Stone Matt
2. Splashback	Subway White Undulated Gloss 75x300, horizontal stack bond with Misty Grey grout
3. Lower cupboards, pantry, fridge provision	Polytec Classic White Matt
4. Overhead cupboards	Laminex Pearl Grey Natural Finish
Joinery handle	Satin Chrome - no handles to overhead cupboards
Sink	Acero 800 Single Bowl Abovemount Sink
Sink mixer	Pina Sink Mixer 200mm Gooseneck Chrome
Cooktop	Westinghouse 600mm Gas Cooktop
Oven	Westinghouse 600mm Multi-function Electric Oven
Rangehood	Westinghouse 600mm Slideout Rangehood
Dishwasher and microwave	Provisions only



Semi frameless shower screen



Phoenix Arlo Basin Mixer



Ivy Shower Arm & Rose



Festival 600mm Single Towel Rail, Toilet Roll Holder & Glass shower shelf in Chrome



Seima Kyra 017 Square Basin

## BATHROOMS

5. Benchtop	Polytec Aspen Stone Matt
6. Cupboard	Polytec Classic White Matt
Joinery handle	Satin Chrome
7. Floor tiles	Suburban Project White Matt 300x300 with Mudberry grout
8. Wall tiles	Plain White Matt 300x400, horizontal stack bond with Ultrawhite grout
Wall tile height	2000mm to walls, skirt tile only to WC where applicable
Basin	Kyra 017 Ceramic Basin Square
Bath	Tondo 1525 Inset Bath (excluding lots 40-42)
Tapware	Phoenix Arlo Basin Mixer, Ivy Wall Mixers, Ivy Bath Outlet (excluding lots 40-42), Ivy Shower Arm & Rose, Chrome
Accessories	Festival 600mm Single Towel Rail, Toilet Roll Holder & Glass shower shelf in Chrome
Shower screen	Series 600 (Semi Frameless) Polished Silver Frame - Clear Glass
Toilet suite	Mero Closed Couple Toilet
Floor grate	Plastic Octagonal
Mirrors	Mirror over all vanity units, custom length x 750mmH x 4mm polished edge
Fan	Exhaust fan to bathroom

## LAUNDRY

Benchtop	Polytec Aspen Stone Matt
Cupboards	Polytec Classic White Matt
Laundry bi-fold doors	Polytec Classic White Matt (excluding lots 40-42)
Joinery handle	Satin Chrome
Floor tiles/skirting	Suburban Project White Matt 300x300 with Mudberry grout (N/A lots 40-42)
Wall tiles	Plain White Matt 300x400, horizontal stack bond with Ultrawhite grout
Wall tile height	600mm splashback above bench, skirt tile only to remainder
Laundry sink	Acero 007 45Ltr Laundry Sink / (Tilos 600 Laundry unit 45L to lots 40-42)
Sink mixer	Ivy MK11 Sink Mixer Chrome

## GENERAL

9. Internal wall paint	Wattyl First Snow
10. Main floor laminate	Clix 7mm Laminate Montana Oak Light Beige
11. Carpet to bedrooms/robes	Summit Point Feathertop
Vinyl sliding door robes	Porcelain with matt silver frame



# iron



Phoenix Pina Sink Mixer\*



Westinghouse 600mm Gas Cooktop



Westinghouse 600mm Electric Oven



Westinghouse 600mm Slideout Rangehood

## KITCHEN

1. Benchtop	Polytec Chambord Matt
2. Splashback	Subway White Satin 75x300, horizontal stack bond with Magellan Grey grout
3. Lower cupboards, pantry, fridge provision	Polytec Classic White Matt
4. Overhead cupboards	Polytec Cavia Lini Matt vertical grain
Joinery handle	Satin Chrome - no handles to overhead cupboards
Sink	Acero 800 Single Bowl Above-mount Sink
Sink mixer	Pina Sink Mixer 200mm Gooseneck Chrome
Cooktop	Westinghouse 600mm Gas Cooktop
Oven	Westinghouse 600mm Multi-function Electric Oven
Rangehood	Westinghouse 600mm Slideout Rangehood
Dishwasher and microwave	Provisions only



Semi frameless shower screen



Phoenix Arlo Basin Mixer



Ivy Shower Arm & Rose



Festival 600mm Single Towel Rail, Toilet Roll Holder & Glass shower shelf in Chrome



Seima Kyra 017 Square Basin

## BATHROOMS

5. Benchtop	Polytec Chambord Matt
6. Cupboard	Polytec Cavia Lini Matt vertical grain
Joinery handle	Satin Chrome
7. Floor tiles	Stoneage Grey Matt 300x300 with Slate Grey grout
8. Wall tiles	Plain White Matt 300x400, horizontal stack bond with ultra white grout
Wall tile height	2000mm to walls, skirt tile only to WC where applicable
Basin	Kyra 017 Ceramic Basin Square
Bath	Tondo 1525 Inset Bath (excluding lots 40-42)
Tapware	Phoenix Arlo Basin Mixer, Ivy Wall Mixers, Ivy Bath Outlet (excluding lots 40-42), Ivy Shower Arm & Rose, Chrome
Accessories	Festival 600mm Single Towel Rail, Toilet Roll Holder & Glass shower shelf in Chrome
Shower screen	Series 600 (Semi Frameless) Polished Silver Frame - Clear Glass
Toilet suite	Mero Closed Couple Toilet
Floor grate	Plastic Octagonal
Mirrors	Mirror over all vanity units, custom length x 750mmH x 4mm polished edge
Fan	Exhaust fan to bathroom

## LAUNDRY

Benchtop	Polytec Chambord Matt
Cupboards	Polytec Cavia Lini Matt vertical grain
Laundry bi-fold doors	Laminex White Natural Finish (excluding lots 40-42)
Joinery handle	Satin Chrome
Floor tiles/skirting	Stoneage Grey Matt 300x300 with Slate Grey grout (N/A lots 40-42)
Wall tiles	Plain White Matt 300x400, horizontal stack bond with Ultrawhite grout
Wall tile height	600mm splashback above bench, skirt tile only to remainder
Laundry sink	Acero 007 45Ltr Laundry Sink/ (Tilos 600 Laundry unit 45L to lots 40-42)
Sink mixer	Ivy MK11 Sink Mixer Chrome

## GENERAL

9. Internal wall paint	Wattyl Cotton Grey
10. Main floor laminate	Clix 7mm Oak Dark Grey Brushed
11. Carpet to bedrooms/robes	Summit Point Hotham
Vinyl sliding door robes	Parchment with matt silver frame

# Everleigh

MUNNO PARA



**For more information:**  
contact Rob Brereton on  
0412 738 017 or  
[robb@liveateverleigh.com.au](mailto:robb@liveateverleigh.com.au)  
[liveateverleigh.com.au](http://liveateverleigh.com.au)

**Fairmont**  
PROJECTS



Fairmont Projects Pty Ltd  
19 Fullarton Rd, Kent Town SA 5067  
Ph: 08 8112 3133 [fairland.com.au](http://fairland.com.au)

RLA 274625. Fairmont Homes Builder's Licence No. 188013. Details correct at time of publishing. All information subject to the approval from the City of Onkaparinga Council. Development plan shown is for indicative purposes only, please refer to final plans held by council. The Information in this marketing brochure, including photographs, artist impressions, illustrations, floor plans, site plans and measurements, are indicative or approximate only, and can be subject to change without notice. 17180